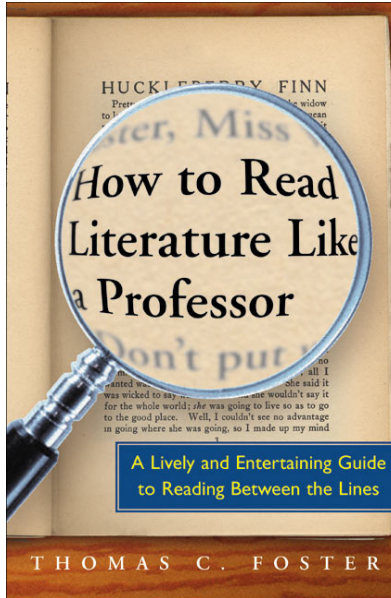


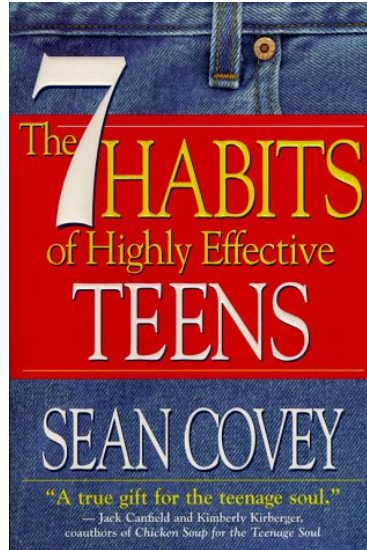
# English II - World Literature

*How to Read Literature like a Professor* by Thomas Foster

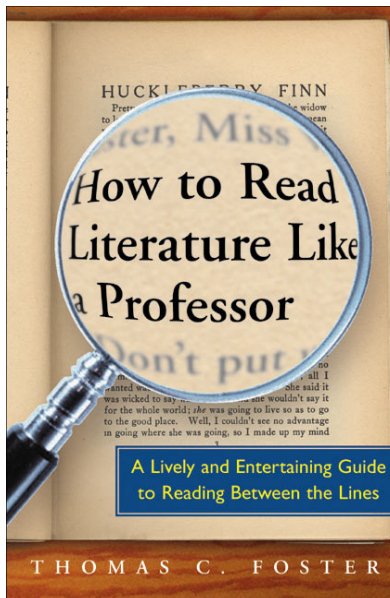


# English II H - World Literature Honors

*The 7 Habits for Highly Effective Teens* by Sean Covey

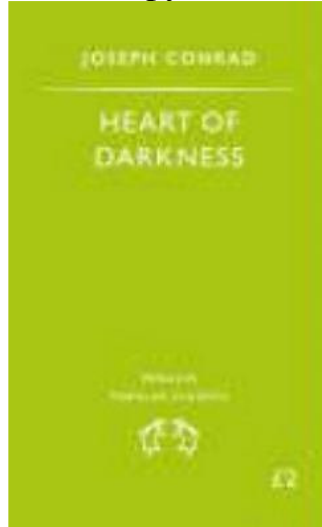


*How to Read Literature like a Professor* by Thomas Foster



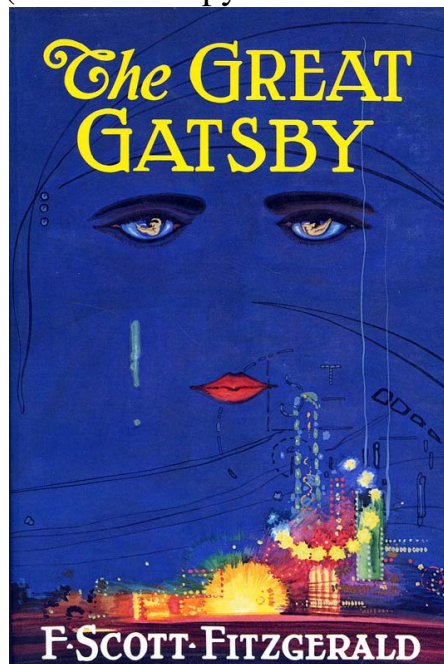
## English IV - British Literature

*Heart of Darkness* by Joseph Conrad  
(This exact copy is not needed)



## 11<sup>th</sup> grade - AP Language and Composition

*The Great Gatsby* by F. Scott Fitzgerald  
(this exact copy is not needed)



AP Language is also to complete the following assignment.

- For each chapter in *The Great Gatsby*, select the most well written paragraph, sentence, or phrase. Be prepared to defend your choices on the first day of school (you may wish to write a reason defending your choice in advance)
- IN ADDITION, AP Language and composition students will be expected to create a notebook of rhetorical devices that defines and gives examples for the different vocabulary we will be using throughout the year.
  - The notebook should be spiral bound, and each entry should have at least ½ blank page under it so we may add onto it throughout the year. This assignment will constitute a major test grade, so take your time on it and invest yourself.
  - Each entry should have the word, a definition (a full and complete sentence), and an example (with the device highlighted if possible).
  - EX: (this is a bare minimum)

**Oxymoron:** a figure of speech composed of contradictory words or phrases placed next to each other to achieve a desired effect.

EX: The old man was a **wise fool**.

The victory was **bitter-sweet**.

#### Rhetorical Devices to be Defined

Ad Hominem	Coherence	Euphony	Induction
Allegory	Concrete	Explication	Inference
Alliteration	Language	Exposition	Invective
Allusion	Connotation	Extended	Inversion
Analogy	Deduction	Metaphor	Irony
Anaphora	Denotation	False Analogy	Jargon
Anecdote	Description	Figurative	Logic
Annotation	Diction	Language	Logical Fallacy
Antithesis	Didactic	Figures of Speech	Metaphor
Aphorism	Discourse	Foreshadowing	Metonymy
Apostrophe	Dramatic Irony	Freight-Train	Mood
Argumentation	Emotional	Generalization	Motif
Assonance	Appeal	Genre	Narration
Asyndeton	Epigraph	Humor	Objectivity
Cacophony	Ethical Appeal	Hyperbole	Onomatopoeia
Colloquialism	Euphemism	Imagery	
Oversimplification	Polysyndeton	Sarcasm	Symbolism
Oxymoron	Red Herring	Satire	Synecdoche
Parable	Reductio ad	Simile	Syntax
Paradox	Absurdum	Speaker	Theme
Parallelism	Repetition	Stereotype	Thesis
Parody	Rhetoric	Straw Man	Tone
Pathos	Rhetorical modes	Style	Transition
Personification	Rhetorical	Subjectivity	Understatement
Persuasion	Question	Syllogism	Voice